



# Rosewood, QLD

Supported Independent Living  
Accommodation



**Supports**  
24/7 Care



**Availability**  
1 Bedroom



**Bathrooms**  
2 Bathrooms



**Location**  
4340



## Discover the magic of country living.

### About your new home...

This charming low-set home offers a modern living space with three bedrooms and two bathrooms. The open planned living area provides a spacious and inviting atmosphere, while the accessible bathrooms add convenience.



Enjoy the outdoors with covered entertaining areas and take in the pleasant outlook. The property also features spacious bedrooms, air conditioning, and a comfortable ambiance.

### About your new neighbourhood...

Rosewood is a beautiful rural town with deep roots embedded within community and surrounded by beautiful farming areas. If being part of a community who values everyone is what you are craving, then Rosewood is the place for you. Your new home is nestled between Brisbane and Toowoomba and within close proximity to the City of Ipswich for all of your social needs.



### About your new housemates...

A friendly male resident in his 50s privately rents this property and is currently seeking a housemate. He has a laid-back personality and enjoys hobbies such as motorbikes, speedway racing, and listening to 80s music. Independence is important to him, and he values a harmonious and respectful living environment.

Changing lives, stronger Communities.

[www.rloa.org.au](http://www.rloa.org.au) | 1300 032 175







# Rosewood, QLD

Supported Independent Living  
Accommodation



**Supports**  
24/7 Care



**Availability**  
1 Bedroom



**Bathrooms**  
2 Bathrooms



**Location**  
4340



## Discover the magic of country living.

### About your new staff team...

Our dedicated staff team comprises qualified and experienced professionals who provide excellent support and care.

With a supervisor onsite to offer guidance to support workers, participants, and their families, we prioritize the well-being of our residents. Our staff receive comprehensive training, tailored to meet the specific needs and requirements of our participants, including health-related training.

### About you...

We currently have one room available in this property. While the tenant prefers a male housemate, we are open to considering other suggestions.

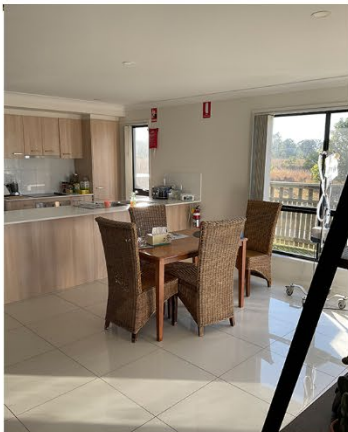
#### Please note:

Residency in this property requires SIL funding.

### How to learn more...

If you would like to learn more about this opportunity or schedule a viewing, please don't hesitate to contact us by calling 1300 032 175 or by emailing [accommodation@rloa.org.au](mailto:accommodation@rloa.org.au)

Our team is ready to support you or your loved one with tailored care and further information about your new home.



Changing lives, stronger Communities.

[www.rloa.org.au](http://www.rloa.org.au) | 1300 032 175

